



Declaration of reusable packaging - responsible for packaging type A

To be completed by members being a party responsible for industrial packaging type A. This means : any party that packages or has goods packaged in Belgium with a view to or as a result of placing them on the Belgian market. To be returned to Valipac no later than **28th February 2021**.

Reference year : 2020		Membership N° :		
Packaging type	Volume / Size	Material	Unit Weight	Number of reusable packaging elements ⁽¹⁾
Euro pallets	80 x 120 cm	Wood	25 kg	
CP pallets (Pallet Return System)	114 x 114 cm	Wood	25 kg	
CHEP pallets	80 x 120 cm	Wood	25 kg	
CHEP pallets	100 x 120 cm	Wood	28 kg	
CHEP pallets	80 x 120 cm	Plastic	19 kg	
EPS boxes (Euro Pool System)		Plastic		
Other				

Version 12/2020

Valipac - Koninck Astridlaan 59A - bus 11 - 1780 Wemmel
Tel.: 02/456.83.10 - Fax: 02/456.83.20 - info@valipac.be - www.valipac.be

Name and signature account manager

⁽¹⁾ Equivalent to the number of single-use packaging elements that would have been required to market the same number of products in Belgium. See "Declaration guide for industrial packaging". Useful information regarding the distinction between single-use and reusable packaging is given on the reverse side of this form.

All documents are available on our website www.valipac.be - chapter "Existing clients".

This English version is only a translation of the French and Dutch document and is provided for reference only. In the event of any conflict or discrepancy between the original French/Dutch version and this English version, the French and Dutch version shall (for all intents and purposes) prevail and be treated as the correct version.

Single-use and reusable packaging

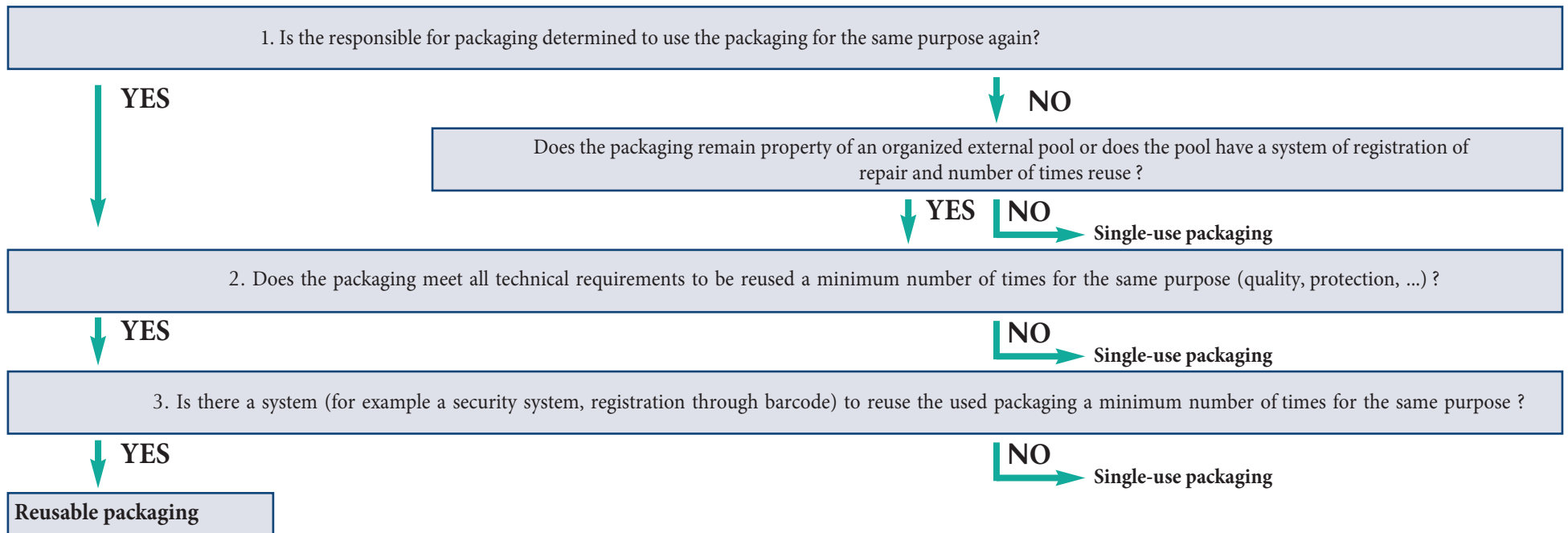
The Cooperation Agreement provides separate obligations for single-use and reusable industrial packaging. Single-use industrial packaging is subject to the take-back and information obligation while reusable packaging is only subject to an information obligation.

Is considered by the Cooperation Agreement as :

Reusable packaging: each packaging intended and designed to create a minimum number of cycles within its lifetime and to be refilled or reused for the same purpose for which it has been designed.

Single-use packaging: each packaging which is not reusable. The responsible for packaging himself is obliged, by means of the decision tree below, to determine whether his packaging is truly reusable. If so, he must be able to prove there exists a system which, in practical terms, makes reuse possible (for example a security system, registration through barcode).

Decision tree:



This English version is only a translation of the French and Dutch document and is provided for reference only. In the event of any conflict or discrepancy between the original French/Dutch version and this English version, the French and Dutch version shall (for all intents and purposes) prevail and be treated as the correct version.