

## **File details**

Legal form \_\_\_\_\_  
Company name \_\_\_\_\_  
Address \_\_\_\_\_  
\_\_\_\_\_  
IBAN n° \_\_\_\_\_  
Registration n° \_\_\_\_\_  
Telephone \_\_\_\_\_  
E-mail \_\_\_\_\_  
Company activity \_\_\_\_\_

## **Account manager**

Name & First name \_\_\_\_\_  
Function \_\_\_\_\_  
Mobile / Phone n° \_\_\_\_\_  
E-mail \_\_\_\_\_

### **To be completed if external account manager:**

Company name \_\_\_\_\_  
Address \_\_\_\_\_  
\_\_\_\_\_  
Registration n° \_\_\_\_\_  
\_\_\_\_\_

## **Invoicing details** (please select option)

☐ By e-mail      ☐ By post

### **Only to be completed if different from above**

E-mail \_\_\_\_\_  
Name contact invoicing \_\_\_\_\_  
Tel. contact invoicing \_\_\_\_\_  
Invoicing address \_\_\_\_\_  
\_\_\_\_\_  
Company name \_\_\_\_\_  
Registration n° \_\_\_\_\_



## Declaration of single-use packaging - responsible for packaging type A

To be completed by members being a party responsible for industrial packaging type A. This means : any party that packages or has goods packaged in Belgium with a view to or as a result of placing them on the Belgian market. To be returned to Valipac no later than **28th February 2023**.

<b>Reference year : 2022</b>	Membership N° :			Product group :	
Packaging material	Total weight of <b>primary packaging</b> <sup>(1)</sup> (tonne)		Total weight of <b>secondary packaging</b> <sup>(1)</sup> (tonne)	Total weight of <b>tertiary packaging</b> <sup>(1)</sup> (tonne)	Total weight of <b>all packaging</b> (tonne)
	<b>Hazardous products</b> <sup>(2)</sup>	<b>Non-hazardous products</b>			
Recyclable paper / cardboard					
Recyclable metal					
Recyclable wood					
Recyclable glass					
Recyclable natural fibres					
Recyclable plastic <sup>(3)</sup>					
Other recyclable materials					
Non-recyclable paper / cardboard <sup>(2)</sup>					
Non-recyclable wood <sup>(2)</sup>					
Non-recyclable plastic <sup>(2)</sup>					
Non-recyclable glass <sup>(2)</sup>					
Other non-recyclable materials <sup>(2)</sup>					
<b>TOTAL</b>					
Number of units marketed			Net weight of products marketed (tonne)		
Name and signature account manager					

The data on this form refer to the entire calendar year 2022.

version 12/2022

- <sup>(1)</sup> Primary packaging = sales packaging  
Secondary packaging = grouped packaging  
Tertiary packaging = transport packaging
- <sup>(2)</sup> See "Declaration guide for industrial packaging "
- <sup>(3)</sup> "Recyclable plastic construction industry" no longer has to be declared separately, but can be declared as "Recyclable plastic"

If you used industrial plastic packaging containing at least 30% recycled material in 2022, you are entitled to the new bonus from Valipac. However, this bonus can only be applied for via an online detailed declaration, not via a paper declaration.

This English version is only a translation of the French and Dutch document and is provided for reference only. In the event of any conflict or discrepancy between the original French/Dutch version and this English version, the French and Dutch version shall (for all intents and purposes) prevail and be treated as the correct version.



## Declaration of single-use packaging - responsible for packaging type B

To be completed by members being a party responsible for industrial packaging type B. This means : where products placed on the Belgian market have not been packaged in Belgium, any party importing the packaged goods (or that has them imported) and that does not unpack them or use them itself. To be returned to Valipac no later than **28th February 2023**.

Reference year : 2022	Membership N° :			Product group :	
Packaging material	Total weight of <b>primary packaging</b> <sup>(1)</sup> (tonne)		Total weight of <b>secondary packaging</b> <sup>(1)</sup> (tonne)	Total weight of <b>tertiary packaging</b> <sup>(1)</sup> (tonne)	Total weight of <b>all packaging</b> (tonne)
	Hazardous products <sup>(2)</sup>	Non-hazardous products			
Recyclable paper / cardboard					
Recyclable metal					
Recyclable wood					
Recyclable glass					
Recyclable natural fibres					
Recyclable plastic <sup>(3)</sup>					
Other recyclable materials					
Non-recyclable paper / cardboard <sup>(2)</sup>					
Non-recyclable wood <sup>(2)</sup>					
Non-recyclable plastic <sup>(2)</sup>					
Non-recyclable glass <sup>(2)</sup>					
Other non-recyclable materials <sup>(2)</sup>					
<b>TOTAL</b>					
Number of units marketed			Net weight of products marketed (tonne)		
Name and signature account manager					

version 12/2022

The data on this form refer to the entire calendar year 2022.

- <sup>(1)</sup> Primary packaging = sales packaging  
 Secondary packaging = grouped packaging  
 Tertiary packaging = transport packaging  
<sup>(2)</sup> See "Declaration guide for industrial packaging"  
<sup>(3)</sup> "Recyclable plastic construction industry" no longer has to be declared separately, but can be declared as "Recyclable plastic"

If you used industrial plastic packaging containing at least 30% recycled material in 2022, you are entitled to the new bonus from Valipac. However, this bonus can only be applied for via an online detailed declaration, not via a paper declaration.

This English version is only a translation of the French and Dutch document and is provided for reference only. In the event of any conflict or discrepancy between the original French/Dutch version and this English version, the French and Dutch version shall (for all intents and purposes) prevail and be treated as the correct version.



## Declaration of single-use packaging - responsible for packaging type C

To be completed by members being a party responsible for industrial packaging type C. This means : with regard to industrial packaging waste arising from products that do not come under type A or type B, any party that unpacks or uses the packaged goods in Belgium and is thereby deemed responsible for the packaging waste generated. To be returned to Valipac no later than **28th February 2023**.

Reference year : 2022	Membership N°		
Packaging material	Primary packaging <sup>(1)</sup> of hazardous products <sup>(2)</sup>	All other packaging	Total weight of all packaging (tonne)
Recyclable paper / cardboard			
Recyclable metal			
Recyclable wood			
Recyclable glass			
Recyclable natural fibres			
Recyclable plastic <sup>(3)</sup>			
Other recyclable materials			
Non-recyclable paper/cardboard <sup>(2)</sup>			
Non-recyclable wood <sup>(2)</sup>			
Non-recyclable plastic <sup>(2)</sup>			
Non-recyclable glass <sup>(2)</sup>			
Other non-recyclable materials <sup>(2)</sup>			
<b>TOTAL</b>			
Name and signature account manager			

version 12/2022

The data on this form refer to the entire calendar year 2022

- (1) Primary packaging = sales packaging  
(2) See "Declaration guide for industrial packaging"  
(3) "Recyclable plastic construction industry" no longer has to be declared separately, but can be declared as "Recyclable plastic"

If you used industrial plastic packaging containing at least 30% recycled material in 2022, you are entitled to the new bonus from Valipac. However, this bonus can only be applied for via an online detailed declaration, not via a paper declaration.

This English version is only a translation of the French and Dutch document and is provided for reference only. In the event of any conflict or discrepancy between the original French/ Dutch version and this English version, the French and Dutch version shall (for all intents and purposes) prevail and be treated as the correct version.

# Single-use and reusable packaging

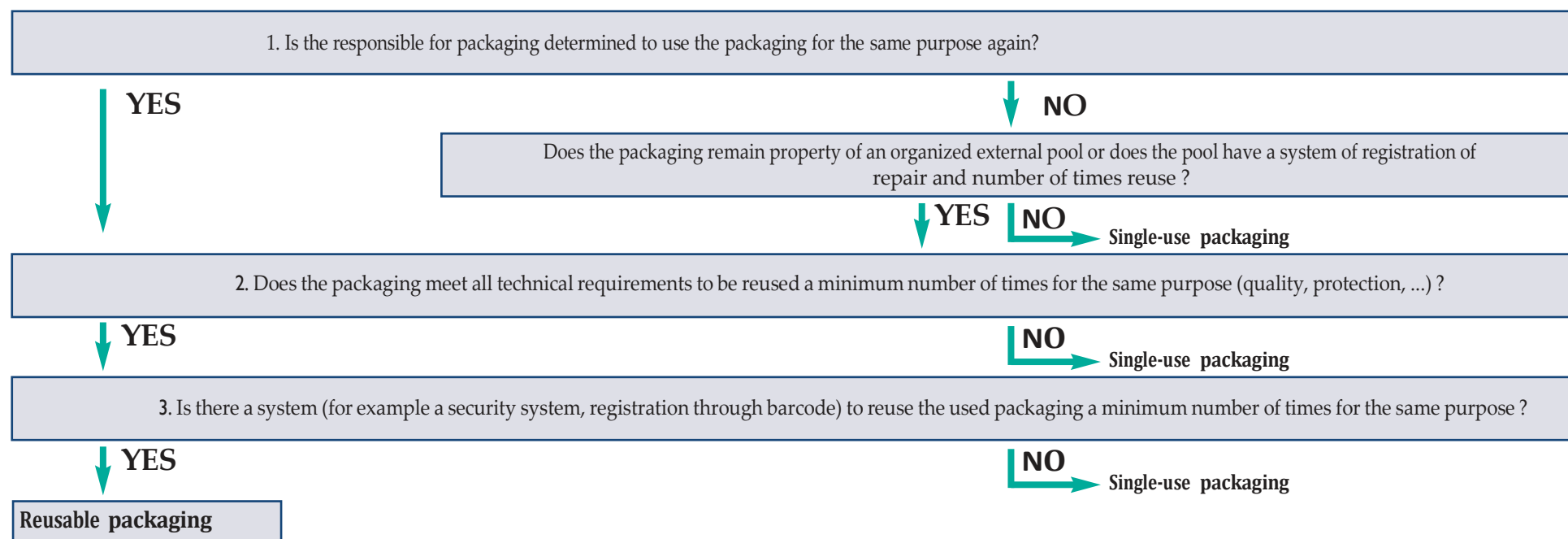
The Cooperation Agreement provides separate obligations for single-use and reusable industrial packaging. Single-use industrial packaging is subject to the take-back and information obligation while reusable packaging is only subject to an information obligation.

Is considered by the Cooperation Agreement as :

**Reusable packaging:** each packaging intended and designed to create a minimum number of cycles within its lifetime and to be refilled or reused for the same purpose for which it has been designed.

**Single-use packaging:** each packaging which is not reusable. The responsible for packaging himself is obliged, by means of the decision tree below, to determine whether his packaging is truly reusable. If so, he must be able to prove there exists a system which, in practical terms, makes reuse possible (for example a security system, registration through barcode).

Decision tree:



This English version is only a translation of the French and Dutch document and is provided for reference only. In the event of any conflict or discrepancy between the original French/Dutch version and this English version, the French and Dutch version shall (for all intents and purposes) prevail and be treated as the correct version.



## Declaration of reusable packaging - responsible for packaging type A

To be completed by members being a party responsible for industrial packaging type A. This means : any party that packages or has goods packaged in Belgium with a view to or as a result of placing them on the Belgian market. To be returned to Valipac no later than **28th February 2023**.

Reference year : 2022		Membership N° :		
Packaging type	Volume / Size	Material	Unit Weight	Number of reusable packaging elements <sup>(1)</sup>
Euro pallets	80 x 120 cm	Wood	25 kg	
CP pallets (Pallet Return System)	114 x 114 cm	Wood	25 kg	
CHEP pallets	80 x 120 cm	Wood	25 kg	
CHEP pallets	100 x 120 cm	Wood	28 kg	
CHEP pallets	80 x 120 cm	Plastic	19 kg	
EPS boxes (Euro Pool System)		Plastic		
Other				

Name and signature account manager

<sup>(1)</sup> Equivalent to the number of single-use packaging elements that would have been required to market the same number of products in Belgium. See "Declaration guide for industrial packaging". Useful information regarding the distinction between single-use and reusable packaging is given on the reverse side of this form.



## Declaration of reusable packaging - responsible for packaging type B

To be completed by members being a party responsible for industrial packaging type B. This means : where products placed on the Belgian market have not been packaged in Belgium, any party importing the packaged goods (or that has them imported) and that does not unpack them or use them itself. To be returned to Valipac no later than **28th February 2023**.

Reference year : 2022		Membership N° :		
Packaging type	Volume / Size	Material	Unit Weight	Number of reusable packaging elements <sup>(1)</sup>
Euro pallets	80 x 120 cm	Wood	25 kg	
CP pallets (Pallet Return System)	114 x 114 cm	Wood	25 kg	
CHEP pallets	80 x 120 cm	Wood	25 kg	
CHEP pallets	100 x 120 cm	Wood	28 kg	
CHEP pallets	80 x 120 cm	Plastic	19 kg	
EPS boxes (Euro Pool System)		Plastic		
Other				

Name and signature account manager

<sup>(1)</sup> Equivalent to the number of single-use packaging elements that would have been required to market the same number of products in Belgium. See "Declaration guide for industrial packaging". Useful information regarding the distinction between single-use and reusable packaging is given on the reverse side of this form.



## Declaration of reusable packaging - responsible for packaging type C

To be completed by members being a party responsible for industrial packaging type C. This means : with regard to industrial packaging waste arising from products that do not come under type A or type B, any party that unpacks or uses the packaged goods in Belgium and is thereby deemed responsible for the packaging waste generated. To be returned to Valipac no later than **28th February 2023**.

Reference year : 2022		Membership N° :		
Packaging type	Volume / Size	Material	Unit Weight	Number of reusable packaging elements <sup>(1)</sup>
Euro pallets	80 x 120 cm	Wood	25 kg	
CP pallets (Pallet Return System)	114 x 114 cm	Wood	25 kg	
CHEP pallets	80 x 120 cm	Wood	25 kg	
CHEP pallets	100 x 120 cm	Wood	28 kg	
CHEP pallets	80 x 120 cm	Plastic	19 kg	
EPS boxes (Euro Pool System)		Plastic		
Other				

Name and signature account manager

<sup>(1)</sup> Equivalent to the number of single-use packaging elements that would have been required to market the same number of products in Belgium. See "Declaration guide for industrial packaging". Useful information regarding the distinction between single-use and reusable packaging is given on the reverse side of this form.